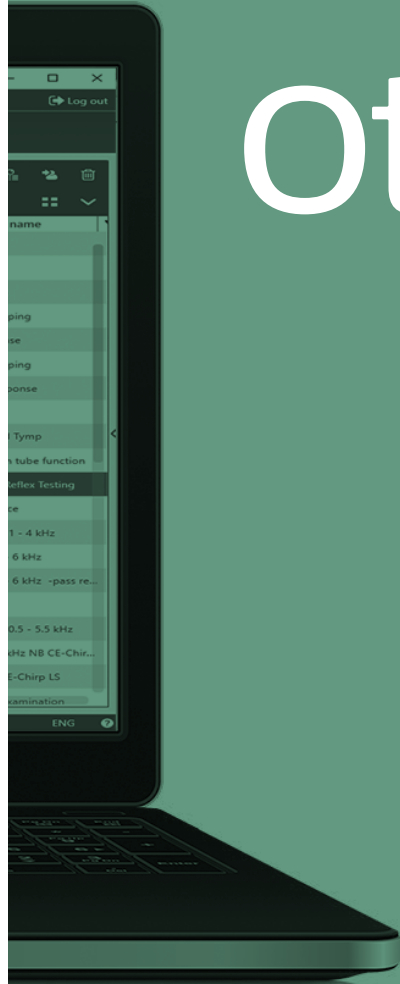




Science  made smarter

# OtoAccess<sup>®</sup>

Data management  
made human



**Interacoustics**



Time is a precious resource in modern healthcare, where administration eats away at time spent with patients.

OtoAccess® frees up time for what actually matters: your patients.

OtoAccess® covers all integration needs and seamlessly integrates with software suites as well as electronic health record (EHR) systems.

# Why OtoAccess®?

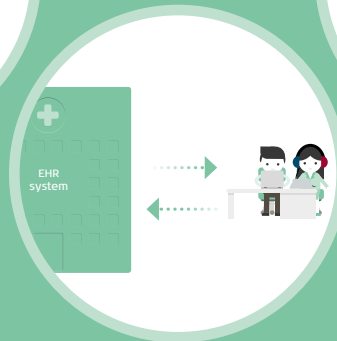
## No matter your size

The range of OtoAccess® solutions cover the needs of the lone practitioner all the way through to the large hospital.



## Complete interoperability

Browse all your patient data in one interface. OtoAccess® integrates the full line of Interacoustics' medical devices.



## Streamline data handling

No PDF exports. No uploads. No printouts. No scanning. Optimized workflows and robust data handling with OtoAccess® Worklist HL7.

## If you use another database

Using our application programming interface, OtoAccess® API, your database provider can integrate with solutions from Interacoustics.

# Complete integration

OtoAccess® is an intuitive data management package that consists of three integration solutions: OtoAccess® Database, OtoAccess® Worklist HL7 and OtoAccess® API.

OtoAccess® makes data handling both simple and human, replacing technical clutter with improved workflows that enable patient-centered care.



OtoAccess® Database is a patient-management system that stores and shares patient records within the same clinic or with multiple, networked facilities.

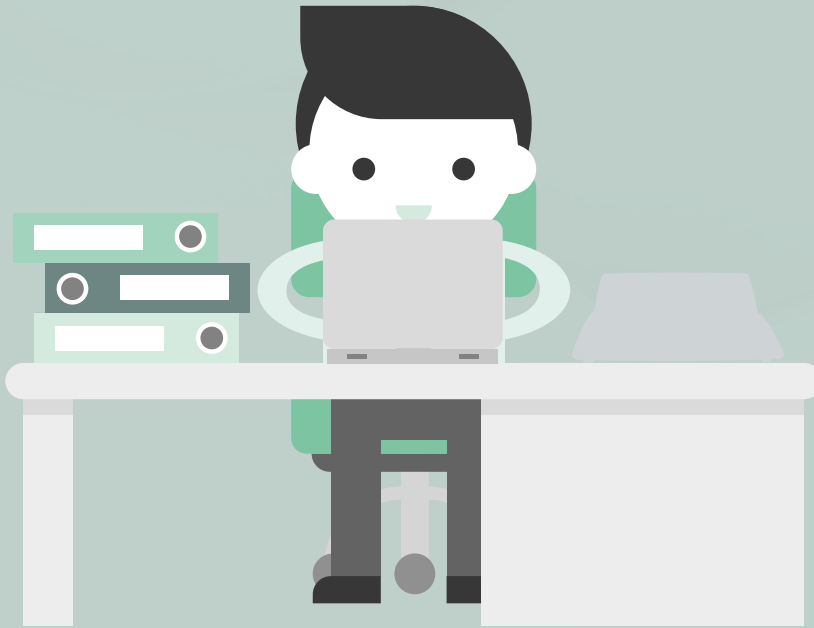
Compatible with all Interacoustics products through a modern interface, it enables paperless and efficient workflows.



OtoAccess® Worklist HL7 automates the communication between OtoAccess® Database and your EHR system. This means you do not have to spend time on re-entering patient data, exports and printing or scanning.



OtoAccess® API makes it easy for other database and system suppliers to integrate with Interacoustics instruments and suites, directly from their own software.

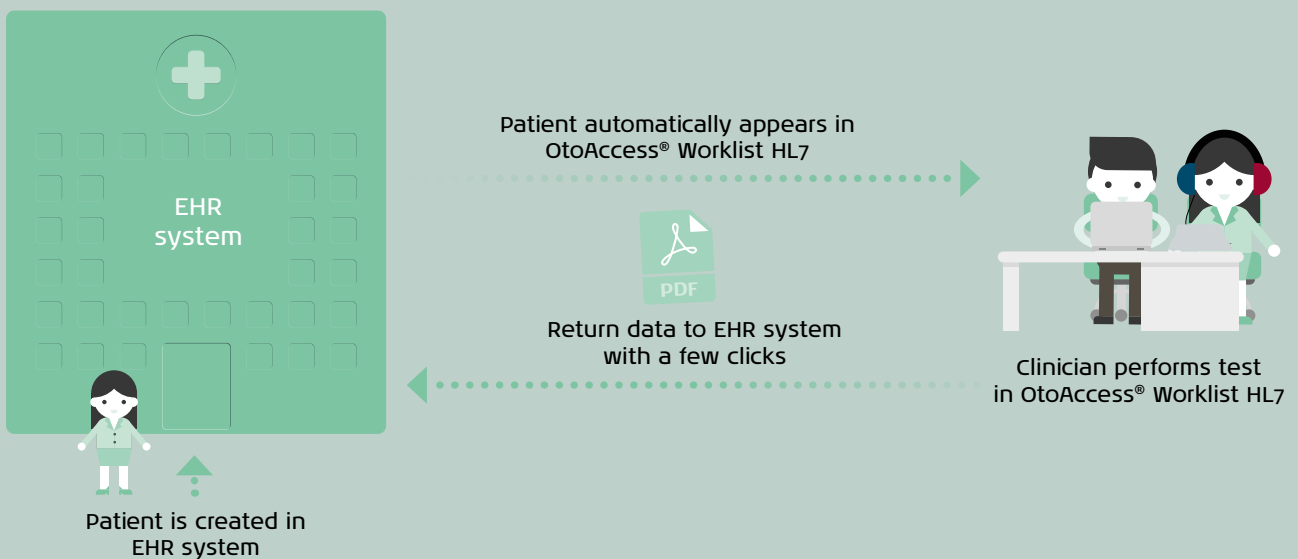


**OtoAccess® Database**

If you have your own clinic, OtoAccess® Database offers a seamless workflow when handling patient and measurement data.

OtoAccess® Database is also ideal for larger clinics, as OtoAccess® Database clients can be networked for patient and measurement data sharing. Thus, this solution can help to improve you and your colleagues' coordination.

**When needed, OtoAccess® Database is ready for HL7 integration with OtoAccess® Worklist HL7 to integrate the database with EHR systems.**





# OtoAccess® Database

## Patient handling made simple

**OtoAccess® Database is a modern patient management system that is compatible with all Interacoustics products. Combining advanced IT functionality with a simple user experience, the database is an ideal solution for any healthcare professional.**

### **Contemporary and compliant**

The database is built to be fully compatible with current and future EHR systems. At the same time, OtoAccess® Database is compliant with HIPAA and FIPS and has improved data management functionality to allow easier compliance with the GDPR.

### **For a smarter clinic**

We have made it easy to integrate OtoAccess® Database with EHR systems

to allow for the seamless transfer of patient data between major healthcare facilities. You can merge patient data from previous versions of OtoAccess® with OtoAccess® Database.

### **Efficient workflows**

With quick session previews and one-click access to reports, you can easily access information about each individual patient.

### Use-case scenario

#### Create new patient



Create a new patient or choose an existing.

#### Perform measurements



Perform your tests and measurements. All data is automatically backed up.

#### Access to previews



Before your patient's next visit, you can access previews of previous results in a matter of clicks.



“

Data handling with OtoAccess® could not be simpler. This allows clinicians to do what they do best: take care of their patients.

**Søren Bo Petersen**  
Senior Product Manager,  
Interacoustics



# OtoAccess® Worklist HL7

## Replace data handling with patient care

Save 5-10  
minutes per  
patient

**OtoAccess® Worklist HL7 is an add-on to OtoAccess® Database. OtoAccess® Worklist HL7 manages patient data in conjunction with HL7-capable electronic health record (EHR) systems.**

OtoAccess® Worklist HL7 allows you to run tests with the EHR system as the data owner.

OtoAccess® Worklist HL7 displays the patients scheduled for visits at the

treatment facility. This information is seamlessly received in the form of HL7 messages from the EHR system.

You choose the relevant patient and perform the required measurements. With a few clicks, you can return the results to your EHR system.

This reduces the data-administrative part of the clinical workflow to a few seconds, which frees up more time for

your patients and more consultations per day.

Historical data is stored in OtoAccess® Database from where you can work with the tested data in detail.

OtoAccess® Worklist HL7 is compatible with EHR systems that support HL7 version 2.X.

### Use-case scenario

#### Retrieve data



OtoAccess® Worklist HL7 retrieves data from your EHR system.

#### Perform measurements



Perform the relevant tests and measurements with your Interacoustics equipment.

#### Return data



Return data to EHR system with a few clicks.



# OtoAccess<sup>®</sup> API

## More integration options

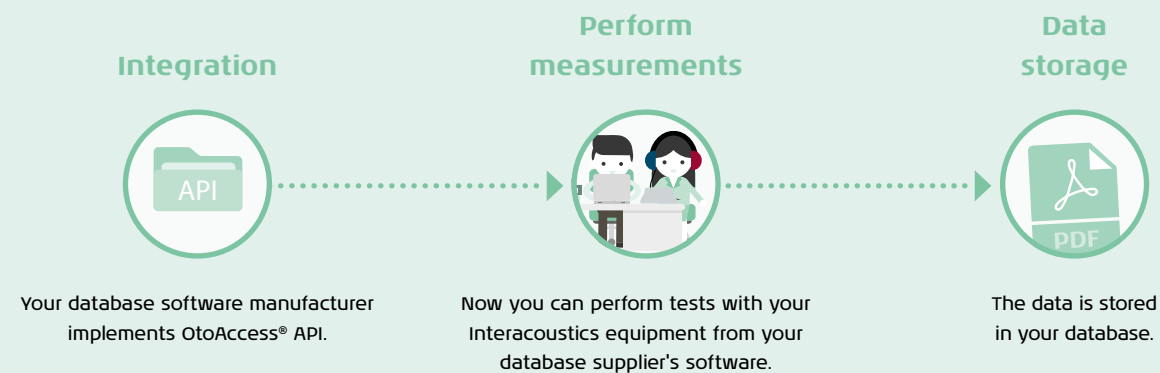
**With OtoAccess<sup>®</sup> API, your database supplier can integrate with instruments from Interacoustics.**

OtoAccess<sup>®</sup> API is an ideal solution for clinicians without OtoAccess<sup>®</sup> Database.

With OtoAccess<sup>®</sup> API, there is no need to use different interfaces to cover your Interacoustics product line. Instead, the API runs as a 'one-component-covers-all' solution. OtoAccess<sup>®</sup> API enables third-party database software

to transfer data securely and easily between your local setup and your collaborators.

### Use-case scenario

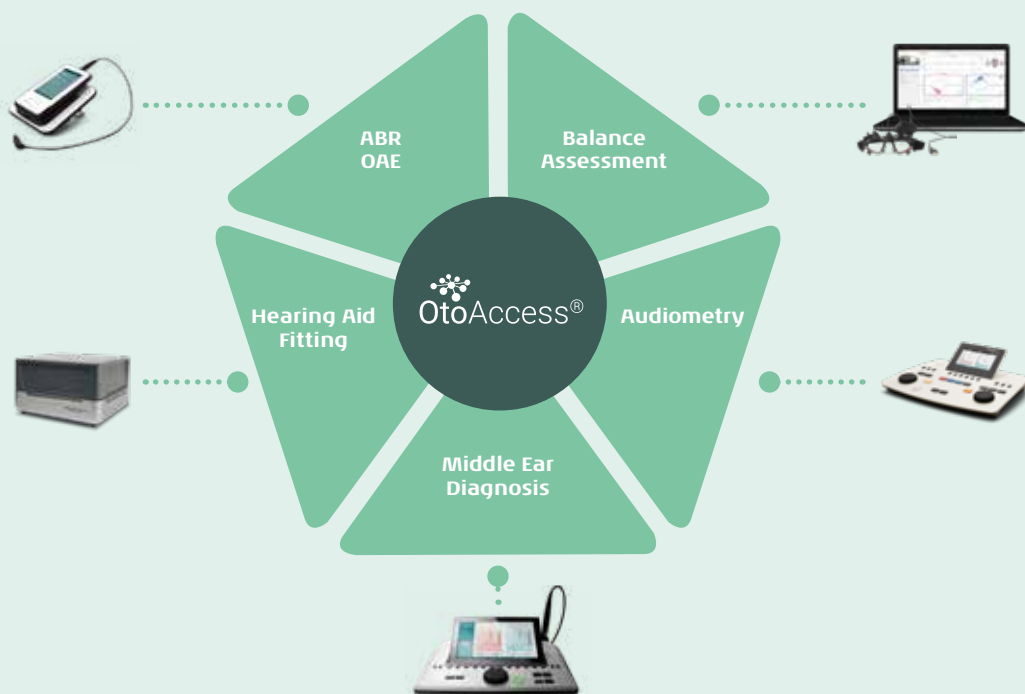




# Complete interoperability

OtoAccess® supports the full line of Interacoustics' product categories. Thereby, you can access all patient data in one common interface. This makes

it easier and faster for you to paint a holistic picture of your patient, without having to switch between different interfaces or suites.



# Science made smarter

**Interacoustics is more than  
state-of-the-art solutions.**

Our mission is clear. We want to lead  
the way in audiology and balance by  
translating complexity into clarity:

- Challenges made into clear solutions
- Knowledge made practical
- Invisible medical conditions made  
tangible and treatable

Our advanced technology and  
sophisticated solutions ease the lives of  
healthcare professionals.

We will continue to set the standard for an  
entire industry. Not for the sake of science.  
But for the sake of enabling professionals  
to provide excellent treatment for their  
millions of patients across the globe.

[Interacoustics.com](http://Interacoustics.com)

Distribuidor

**Deracah**  
MEDICA

✉ [ventas@beracahmedica.mx](mailto:ventas@beracahmedica.mx)

☎ 662 15 10 979



Even though data format standards  
vary between countries and clinics,  
OtoAccess® realizes integration without  
time-consuming hassle, so you can  
enjoy all the benefits - regardless of  
your current setup.

In short, OtoAccess® is data  
management made human.



  
**Interacoustics**

**Audiometry**  
~~~~~

**Tympanometry**  
~~~~~

**ABR**  
~~~~~

**OAE**  
~~~~~

**Hearing Aid Fitting**  
~~~~~

**Balance**  
~~~~~