

*Digital!*

Mammography system

# *PinkView-DR PLUS*

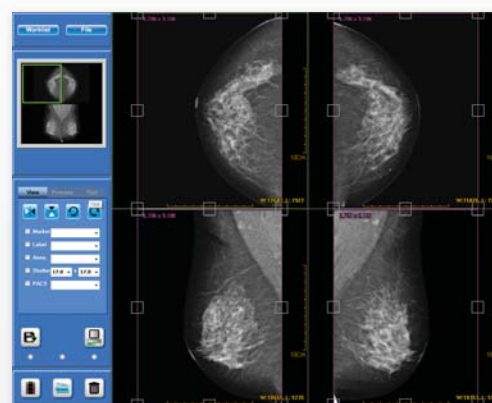
Optimized digital mammography for breast cancer screening  
Easy and convenient software operation system



- High-tech digital image acquisition system
- Truly gorgeous and luxurious design
- Harmonizing with luxurious hospital interior with modern style
- Completed compatibility for DICOM3.0
- Compression control by international regulation
- Comfortable MICOM compression with load cell
- SID 660mm for high sharpness image
- Easy detachable magnification device



Synchronizing operation and display all parameters at PC and Main OP



Convenient local saving and completed compatible system with PACS

## • Specifications

### X-ray Generator

High Frequency Inverter Type  
 Large Focal Point : 20~39 kV (1kV step) / 1~720 mAs  
 Small Focal Point : 20~39 kV (1kV step) / 1~350 mAs  
 Max. mA Current : 100 mA @ 28 kV

### X-ray Tube

Target Material : W (Tungsten Rotating Anode)  
 Anode Heat Capacity : 300,000 HU  
 Focal spot : Small 0.1 mm / Large 0.3 mm  
 Additional Filtration : 0.05 mm Rh

### Image Receptor

Digital Detector : CMOS or TFT array  
 Moving Bucky Device : 18x24 or 24x30cm  
 Grid Ratio 4 : 1, 36 Lines / cm  
 Magnification Device : x1.8

### Automatic Exposure Control

Mode : AEC, Auto mAs, Manual  
 Operation of AEC : Pre-exposure Analysis

## • Dimensions

